

S8 Defibrillator Monitor

COMEN

COMEN Share with the World



Diproduksi Oleh :

Shenzhen Comen Medical Instruments Co.,Ltd
Address: Floor 10, Floor 11 and Section C of Floor 12 of Building 1 A & Floor 1 to Floor 5 of Building 2, FIYTA Timepiece Building, Nanhuan Avenue, Matian Sub-district, Guangming District, Shenzhen, Guangdong, 518106, P.R. China.

Didistribusikan Oleh :
PT. Trimedik Surya Selaras
Alamat : Duta Iconic Blok B No.1 Jl. MH Thamrin, Kota Tangerang, Banten



Shenzhen Comen Medical Instruments Co., Ltd.

P/N: EN-S8-8P-20190708-V1.0

Add: No.2 of FIYTA Timepiece Building, Nanhuan Avenue, Gongming Sub-district, Guangming New District, Shenzhen, 518106, Guangdong, China
Tel:+86-755-2640 8879 400-700-9488 Fax:+86-755-2643 1232 Website: en.comen.com E-mail: info@szcomen.com

KEMENKES RI AKL.....



Provide a full range of functions to meet various life support needs

With Defibrillation, Pacing, Monitoring and AED mode, S8 is not only suitable for pre-hospital first aid, but also applicable in in-hospital usage.

Defibrillation: Manual defibrillation modes include synchronous cardioversion and asynchronous defibrillation.

Pacing: Having on-demand pacing and fixed pacing mode, for patients with cardiac arrest and acute severe slow arrhythmia, in vitro non-invasive pacing mode is rapid, easy to master, time-saving and improve recovery success rate.

Monitor: 5-lead ECG monitoring as standard, optional monitoring functions include SpO₂, TEMP, EtCO₂, IBP, and 12-lead ECG are also available for continuous monitoring of patient vital signs.

AED: The model applies patented analysis algorithm and automated analysis as well as convenient setting to guide clinical emergency personnel in providing defibrillation and basic life support.

The Most Convenient and Efficient Life Rescue

As the most important part of CPR, time is the key for defibrillator monitor. Therefore, S8 abandons complex operation and improve convenience and efficiency for rescue.

3 steps, fulfill defibrillating operation (Energy selection - Charging - Discharging).



1 button, selecting 12-lead monitoring interface.



1 knob, mode can be switched among manual defibrillation, pacing and AED.

25 types, energy selections.

1s, electricity can be set up, rescue time is guaranteed fully.



1 for 2, electrode paddles can be divided into large and small electrode paddles which can defibrillate for both adult and child respectively.



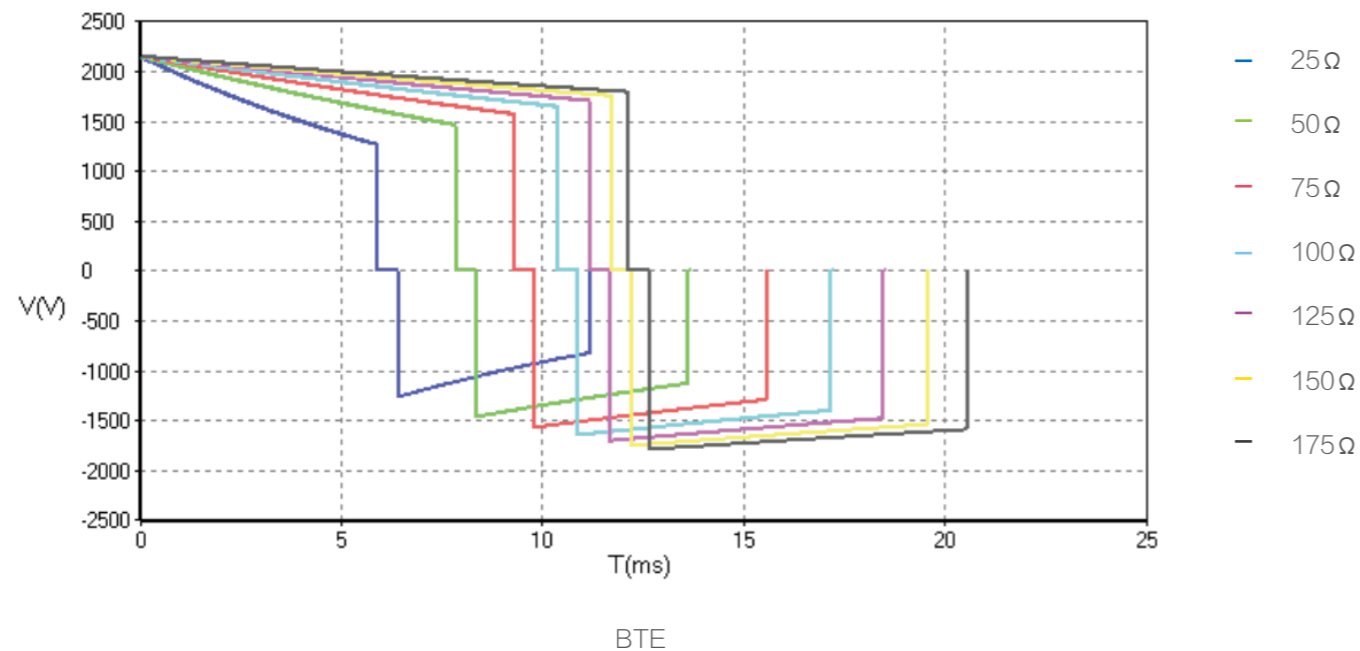
1 pair, defibrillating operation can be completed on a pair of electrode paddles.

Higher and Greater for Better Rescue

Up to **360J** energy selection, for patients with high defibrillation thresholds such as myocardial infarction, obesity, high impedance, higher energy selection indicates greater defibrillation success rate.

Greater Impedance Range from **20-250 Ω**, suitable for a great range of patients.

Higher efficiency with Advanced Biphasic Truncated Exponential (BTE) waveform technology and automatic impedance compensation.



Lower energy



Lighter damage



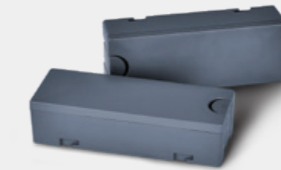
Better defibrillation

Standby as you need, review as you request

Reliable quality has always been the pursuit of COMEN R&D personnel. As a first-aid device, defibrillator is often utilized in extreme environments, whereby its reliability is highlighted in various circumstances.



Anti-shock and anti-fall, sturdy and durable. With IP44 Ingress protection, S8 avoids the penetration of liquid and can be applied in complexly outdoor environment.



Large-capacity lithium battery, support fast charging and more than 420 times of maximum discharges, satisfy clinical requirements.



With manual, automatic, power-on self-test function, ensure application at anytime.



80mm thermal printer, waveforms are more clear and accurate.



Support 240 minutes of AED voice recording storage, the recording of each patient can be saved up to 60 minutes.



Numerous events review, trend and data storing.

Information-based Network Solution

Provides a comprehensive networking solution, allowing users to access patient's information and improve work efficiency when needed.

